



Datenblatt - Fiche technique - Data sheet

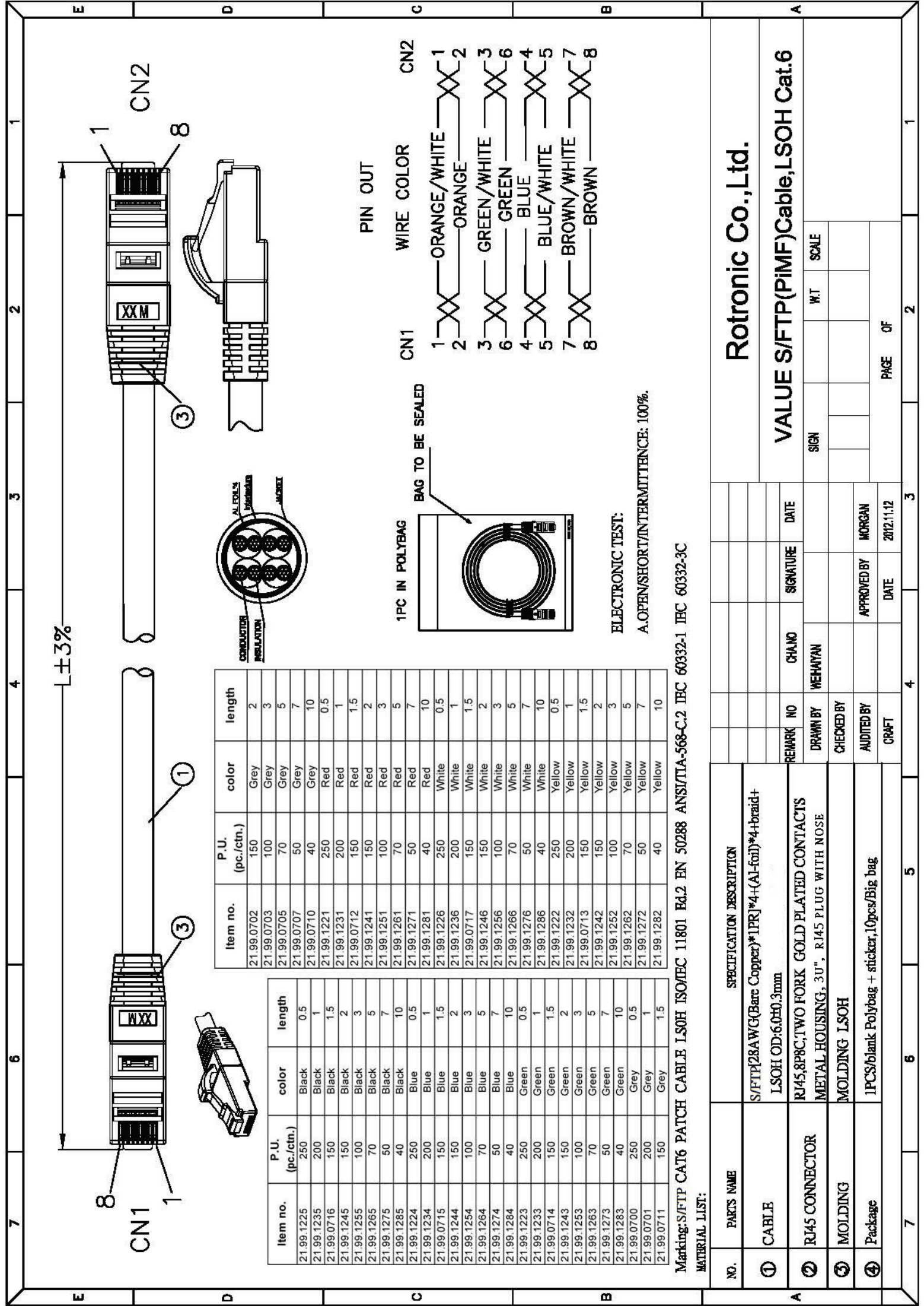
21.99.1275



VALUE S/FTP-(PiMF-)Patchkabel Kat.6, LSOH, schwarz, 7m

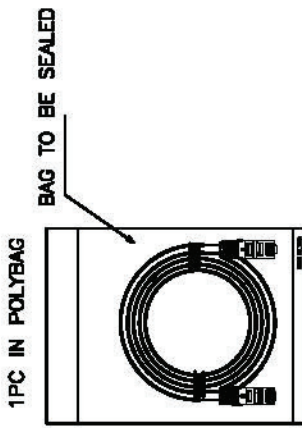
Cordon VALUE Cat.6 S/FTP LSOH noir, 7,0m

VALUE S/FTP Patch Cord Cat.6, halogen-free, black, 7m



PIN OUT

| CN1 | WIRE COLOR | CN2 |
|-----|--------------|-----|
| 1 | ORANGE/WHITE | 1 |
| 2 | ORANGE | 2 |
| 3 | GREEN/WHITE | 3 |
| 6 | GREEN | 6 |
| 4 | BLUE | 4 |
| 5 | BLUE/WHITE | 5 |
| 7 | BROWN/WHITE | 7 |
| 8 | BROWN | 8 |



ELECTRONIC TEST:
A.OPEN/SHORT/INTERMITTENCE: 100%.

| Item no. | P.U. (pc./ctn.) | color | length |
|------------|-----------------|--------|--------|
| 21.99.0702 | 150 | Grey | 2 |
| 21.99.0703 | 100 | Grey | 3 |
| 21.99.0705 | 70 | Grey | 5 |
| 21.99.0707 | 50 | Grey | 7 |
| 21.99.0710 | 40 | Grey | 10 |
| 21.99.1221 | 250 | Red | 0.5 |
| 21.99.1231 | 200 | Red | 1 |
| 21.99.0712 | 150 | Red | 1.5 |
| 21.99.1241 | 150 | Red | 2 |
| 21.99.1251 | 100 | Red | 3 |
| 21.99.1261 | 70 | Red | 5 |
| 21.99.1271 | 50 | Red | 7 |
| 21.99.1281 | 40 | Red | 10 |
| 21.99.1226 | 250 | White | 0.5 |
| 21.99.1236 | 200 | White | 1 |
| 21.99.0717 | 150 | White | 1.5 |
| 21.99.1246 | 150 | White | 2 |
| 21.99.1256 | 100 | White | 3 |
| 21.99.1266 | 70 | White | 5 |
| 21.99.1276 | 50 | White | 7 |
| 21.99.1286 | 40 | White | 10 |
| 21.99.1222 | 250 | Yellow | 0.5 |
| 21.99.1232 | 200 | Yellow | 1 |
| 21.99.0713 | 150 | Yellow | 1.5 |
| 21.99.1242 | 150 | Yellow | 2 |
| 21.99.1252 | 100 | Yellow | 3 |
| 21.99.1262 | 70 | Yellow | 5 |
| 21.99.1272 | 50 | Yellow | 7 |
| 21.99.1282 | 40 | Yellow | 10 |

| Item no. | P.U. (pc./ctn.) | color | length |
|------------|-----------------|-------|--------|
| 21.99.1225 | 250 | Black | 0.5 |
| 21.99.1235 | 200 | Black | 1 |
| 21.99.0716 | 150 | Black | 1.5 |
| 21.99.1245 | 150 | Black | 2 |
| 21.99.1255 | 100 | Black | 3 |
| 21.99.1265 | 70 | Black | 5 |
| 21.99.1275 | 50 | Black | 7 |
| 21.99.1285 | 40 | Black | 10 |
| 21.99.1224 | 250 | Blue | 0.5 |
| 21.99.1234 | 200 | Blue | 1 |
| 21.99.0715 | 150 | Blue | 1.5 |
| 21.99.1244 | 150 | Blue | 2 |
| 21.99.1254 | 100 | Blue | 3 |
| 21.99.1264 | 70 | Blue | 5 |
| 21.99.1274 | 50 | Blue | 7 |
| 21.99.1284 | 40 | Blue | 10 |
| 21.99.1223 | 250 | Green | 0.5 |
| 21.99.1233 | 200 | Green | 1 |
| 21.99.0714 | 150 | Green | 1.5 |
| 21.99.1243 | 150 | Green | 2 |
| 21.99.1253 | 100 | Green | 3 |
| 21.99.1263 | 70 | Green | 5 |
| 21.99.1273 | 50 | Green | 7 |
| 21.99.1283 | 40 | Green | 10 |
| 21.99.0700 | 250 | Grey | 0.5 |
| 21.99.0701 | 200 | Grey | 1 |
| 21.99.0711 | 150 | Grey | 1.5 |

Marking:S/FTP CAT6 PATCH CABLE LSOH ISO/IEC 11801 Ed.2 EN 50288 ANSI/TIA-568-C.2 IEC 60332-1 IEC 60332-3C

MATERIAL LIST:

| NO. | PARTS NAME | SPECIFICATION DESCRIPTION |
|-----|----------------|---|
| ① | CABLE | S/FTP28AWG(Bare Copper)*1PR]*4-(Al-foil)*4-braid+ LSOH OD:6.0H0.3mm |
| ② | RJ45 CONNECTOR | RJ45,8P8C,TWO FORK GOLD PLATED CONTACTS METAL HOUSING, 3U", RJ45 PLUG WITH NOSE |
| ③ | MOLDING | MOLDING LSOH |
| ④ | Package | 1PCS/blank Polybag + sticker,10pcs/Big bag |

Rotronic Co.,Ltd.

VALUE S/FTP(PiMF)Cable,LSOH Cat.6

| REMARK | NO | CHANO | SIGNATURE | DATE |
|------------|---------|-------|-----------|------------|
| DRAWN BY | WEHAYAN | | | |
| CHECKED BY | | | | |
| AUDITED BY | MORGAN | | | 2012.11.12 |
| CRAFT | | | | |

| SIGN | W/T | SCALE |
|------|-----|-------|
| | | |